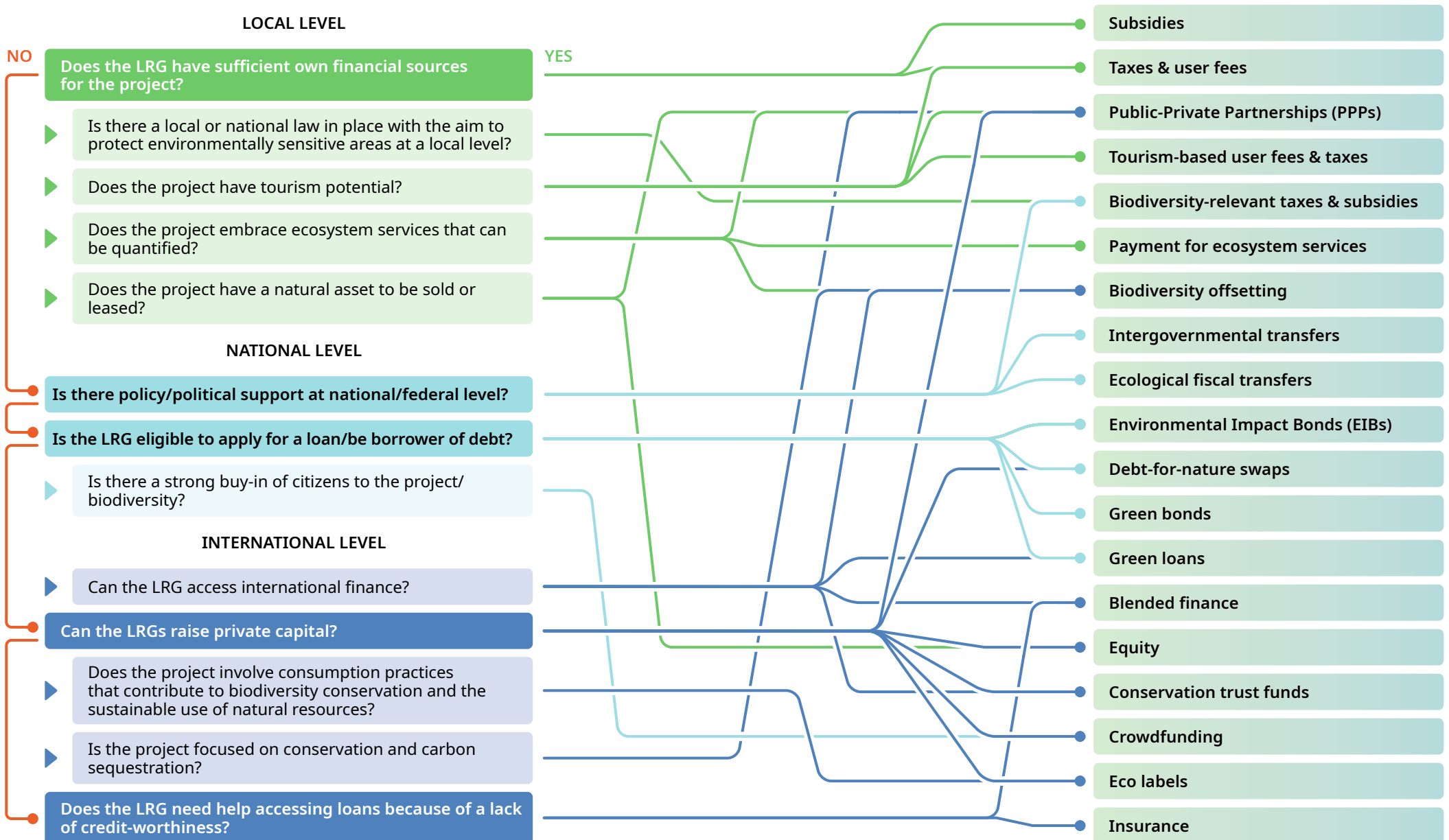


Biodiversity finance decision-making tree

This decision-making tree, with a specific focus on biodiversity, aims to support project developers to navigate among the numerous financing instruments available, and help them to find the most suitable ones, taking into consideration their local and national environment, as well as ability to access international financing sources. The tree should be used together with the **Guide to Biodiversity Financing for Cities and Regions**, which contains a description of each of these financing tools, illustrated by case studies. Please also note that this tree serves to support decision making, and that multiple financing solutions for a single project can exist, with projects often being financed by a mix of sources and instruments.



ABOUT INTERACT-BIO

The INTERACT-Bio project is funded by the German Federal Ministry for the Environment, Nature Conservation and Nuclear Safety and Consumer Protection (BMUV) through the International Climate Initiative (IKI). INTERACT-Bio, led by ICLEI, is designed to improve the utilization and management of nature within fast-growing cities and the regions surrounding them. It aims to provide expanding urban communities in the Global South with nature-based solutions and associated benefits.

ABOUT TRANSFORMATIVE ACTIONS PROGRAM (TAP)

The Transformative Actions Program (TAP) is a global initiative led by ICLEI to support local and regional governments transform their low-emission and resilient development infrastructure concepts into mature, robust and bankable projects ready for financing and implementation.

ABOUT ICLEI – LOCAL GOVERNMENTS FOR SUSTAINABILITY

ICLEI – Local Governments for Sustainability is a global network working with more than 2,500 local and regional governments committed to sustainable urban development. Active in 125+ countries, ICLEI influences sustainability policy and drives local action for low emission, nature-based, equitable, resilient and circular development. ICLEI's Members and team of experts work together through peer exchange, partnerships and capacity building to create systemic change for urban sustainability.

AUTHORS

ICLEI World Secretariat

Dr Eszter Mogyorosy
Cecilia Rivera
Beatriz Fonseca

COLLABORATORS

ICLEI World Secretariat

Sunandan Tiwari
Thibault Renoux
Ariel Dekovic
Haris Rizvanski

ICLEI South American Secretariat

Sergio Aranguren
Marilia Israel

ICLEI Africa Secretariat

Ingrid Coetzee
Ursula Wellmann
Nikara Mahadeo

DESIGN

ICLEI World Secretariat

Olga Tokareva

CITATION

This publication should be cited as:
“ICLEI - Local Governments for Sustainability, 2023. Biodiversity Finance Decision-Making Tree. Bonn, Germany.”

COPYRIGHT

© 2023 ICLEI - Local Governments for Sustainability e.V. All rights reserved. The ICLEI World Secretariat holds the copyright of this publication, including text, analyses, logos and layout designs. Requests to reproduce or to quote material in part or in full should be sent to carbonn@iclei.org. ICLEI encourages use and dissemination of this publication, and permission to reproduce this material without modification will usually be permitted without charge for non-commercial use.

CONTACT

ICLEI – Local Governments for Sustainability e.V.
World Secretariat
Kaiser-Friedrich-Str. 7
53113 Bonn | Germany
Tel. +49-228 / 97 62 99-00
www.iclei.org



Supported by:



based on a decision of
the German Bundestag